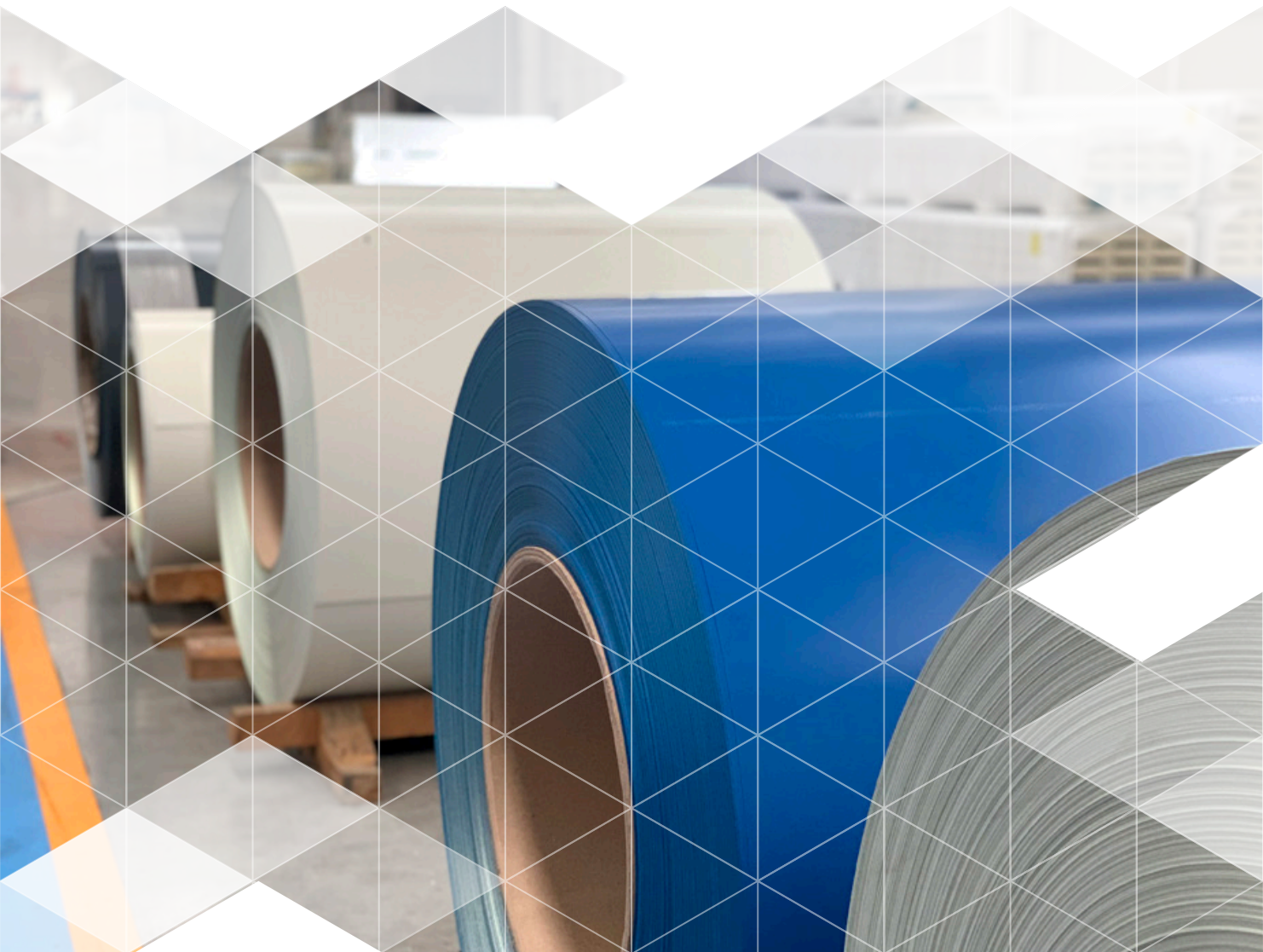




# Color Chart



# COLOR CHART

## Category 1 / Polyester Standard / USDA

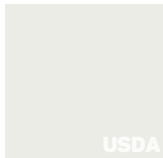
### Standard Color Steel



RAL 9002  
White Grey



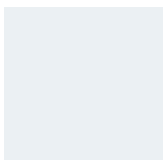
RAL 9010  
Pure White



SIMIL RAL 9003  
Signal white



Standard Sand



Pyrenean White

### Special Color Steel



SIMIL RAL 6028  
Pine Green



SIMIL RAL 7016  
Anthracite Grey



SIMIL RAL 5010  
Genecian Blue



SIMIL RAL 3020  
Carmine Red



RAL 2004  
Pure Orange



SIMIL RAL 3009  
Oxide Red

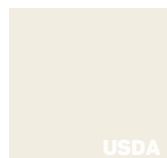


SIMIL RAL 9006  
Silver Grey



RAL 8004  
Copper Brown

## Category 2 / Kynar



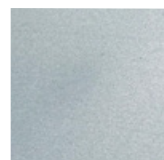
RAL 9010  
Pure White

All Category 2 can be developed in same colors of Category 1

Coatings are durable polyvinylidene systems containing 70% Kynar or Hylar resins, ceramic and other inorganic pigments. This system provides a powerful chemical bond, resistance to ultraviolet radiation with exceptional color retention, chalking resistance, and chemical degradation, 20 years warranty.



Special Blue



Metalic Grey

## Category 3 / Special Coating or Finish



Corten Steel



Stainless Steel  
(Gauge 26, 24)

## Internal and External Faces

It is important to consider that the two faces of the panel will be in contact with two significantly different environments.

The external face will be in contact with pollutants in the atmosphere, the sun, and solar spectrum UV rays. In addition, raising the temperature of the external metal face will cause a physical-chemical reaction on the organic coating. Internal faces will have a temperature significantly lower due to the insulation of the panel. The internal environment, the pollutants of production lines, and chemical agents used in those processes, all need to be considered for the selection of the internal panel face.

A pre-lacquered steel product is composed of a zinc base coat with subsequent primer and finish coats.



U.V Rays



Rust



Condensation



Chemical  
Attack



Erosion

**IMPORTANT:** For stock availability, thickness, supports, non-standard colors and guarantees, contact IsoCindu. Colors may vary depending on the batch of numeric codes that correspond to the most similar RAL code. \*Custom colors will be an up charged / Confirm steel chart last date version.

For special guarantees, please refer to your commercial agent to fill out the customer environmental questionnaire.

**Colours:** \*Match the original colours within the limitations of printing